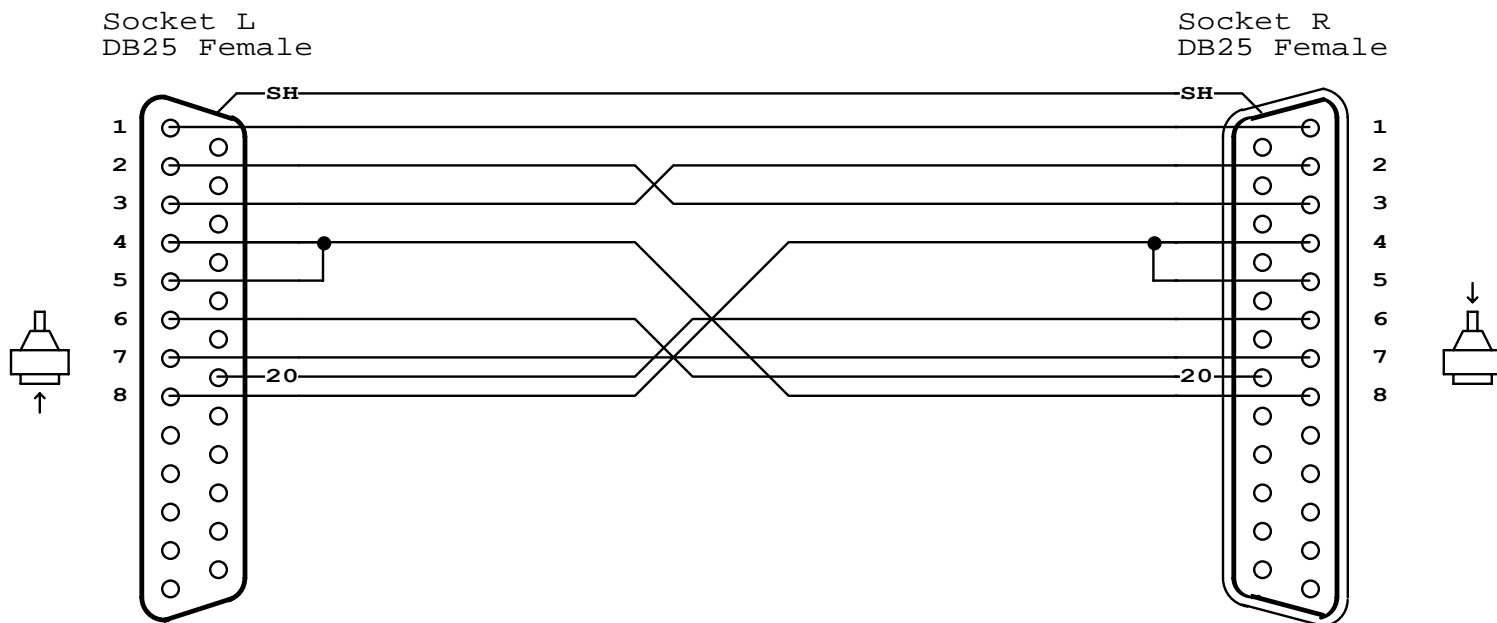


Name: 12 DB25F-DB25F-S8X2

DB25 NULL MODEM

Print your company information here. Set up in Preferences / Print Options.



NETLIST

| | |
|------|---------|
| L-SH | R-SH |
| L-1 | R-1 |
| L-2 | R-3 |
| L-3 | R-2 |
| L-4 | L-5 R-8 |
| L-6 | R-20 |
| L-7 | R-7 |
| L-8 | R-4 R-5 |
| L-20 | R-6 |

NOTES

DB25 NULL MODEM
 (unusual handshaking)
 Use this female-to-female cable in any application where you wish to connect two DTE devices (for example, two computers). A male-to-male equivalent of this cable would be used to connect two DCE devices.

NOTE: Not all null modem cables connect handshaking lines the same way. Refer to the manual for your equipment if you experience problems.

In this cable, the Request-to-Send (pin 4) on one side asserts the Clear-to-Send (pin 5) on the **SAME** side (self-connect) and the Carrier Detect (pin 8) on the other side. The other handshaking signals are employed in a conventional manner.

L A B E L

NULL MODEM
CAMI ID 104