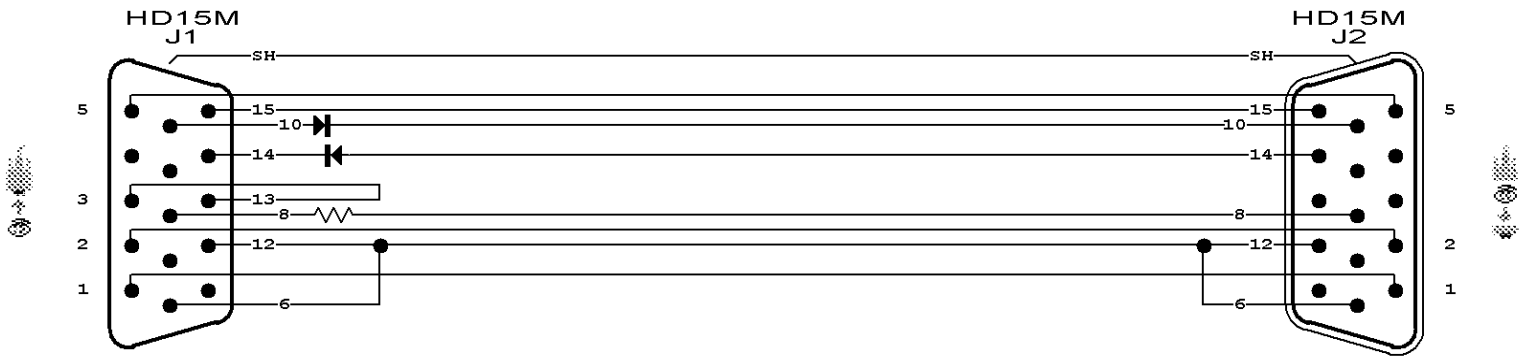


Name: ROTATOR CABLE

HD15 ROTATOR CONTROL CABLE

CAMI Research Test Lab, Tel: 800-776-0414



NOTES

**HD15 ROTATOR CONTROL CABLE**  
 The jumper between Pins 3 and 13 identifies this as Revision 2.1 with a specific application for Model 1210 rudder gear rotator motor. Previous versions connect Pin 3 to pin 4 and are not suitable for Model 1210.  
  
 Use AMP Part Number 741312-1 for the Male connector and 741313-1 for the Female. Ensure that resistance thresholds are set for 0.8 ohms conduction and 5 Megohms isolation.

LABEL

**HD15 ALL-LINE EXTENSION**  
 CAMI ID 005

NETLIST

Line	J1	J2	Value
1	SH	SH	
2	1	1	
3	2	2	
4	3, 13		
5	5	5	
6	6, 12	6, 12	
7	8	8	100 Ω
8	+10	-10	Diode
9	-14	+14	Diode
10	15	15	