

## CableEye® Software Offers Simplified Automation User Interface

January 21, 2015

CAMI Research® (Acton, MA) announces an update to its CableEye Software enabling a **Simplified Automation User Interface** with its Cable and Harness Testing Systems.

### More Options, Increased Flexibility

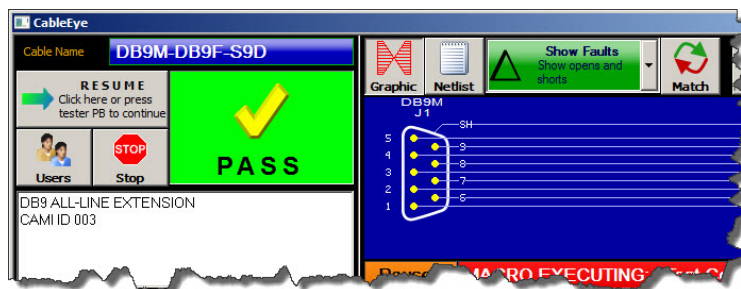
The update offers more options increasing flexibility of use. This *optional* 'simplified' GUI is suitable for performing basic cable and harness pass/fail tests such as might occur on the production line. The new interface is compatible with Touch Screen operation, and isolates the worker from CableEye features and controls superfluous to their assigned task.

This Simplified Automation User Interface feature comes with all new CableEye products as part of version 5-B1188 software. It is also available as a software update that may be purchased by itself (Item 726B), or downloaded from our Customer Support site with a valid Warranty.

Two 'simplified' views are provided, Basic and Plus, and present clean-cut information, ideal for the production floor.

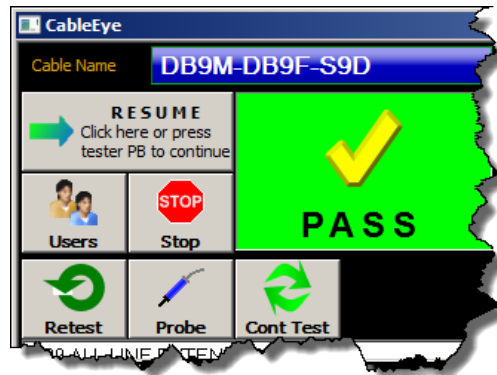
### Touch Screen Cable and Harness Testing Automation on the Production Floor

Simplified Automation Screen, Basic hides the main window and replaces it with one containing fewer buttons and sub-windows:



(contd.)

**Simplified Automation Screen, Plus** consists of the Basic view, with the addition of Re-Test, Probe, and Continuous Test buttons that can be used when the test is paused to permit rework and analysis:



To ready the **Simplified Automation User Interface**, qualified personnel/management prepare Automation Scripting (Macros or Javascript) through the Automatic Test Window of the main CableEye software. This customized Automation Script may be saved to a desktop shortcut on production workstations. Production workers launch the Simplified Automation Screen from the shortcut on their workstation ... which may be a Touch Screen ... and initiate the test sequence embedded within.

Visit <http://camiresearch.com/simplified-automation-screen.html> to find out more.

This software update may be purchased by itself for \$95 (Item 726B), or downloaded from our Customer Support site with a [Warranty Renewal](#). Warranty renewals start at \$160 for an M3U system without expansion modules.

*CAMI Research produces expandable and upgradable diagnostic Cable & Harness Test Systems for assembly, prototyping, production, and QC of standard or custom cables. CableEye® Testers display, and document basic electrical properties such as continuity, resistance, dielectric breakdown, insulation resistance, miswires, and sporadic defects.*