

CableEye® Training and Verification Adapter Board, CB-T1

May 21, 2015

CAMI Research Inc. (Acton, MA) announces a new, dual-purpose connector board for training new users on its CableEye cable and harness testing systems, and for performing tester system verification.

Training

Demonstrated at the 2015 Wire Processing Technology Expo, the CB-T1 is a great way to familiarize new employees with CableEye test systems during their orientation. Training may be self-directed with this tool.

Populated with a few common connectors, the board allows trainees to methodically experience how the system responds to opens, shorts, miswires, diodes, resistance, and intermittent connections while at the same time learning to operate CableEye.

The adapter board comes with identification LEDs for each connector that may be used to show the trainee operator which connector s/he must connect.

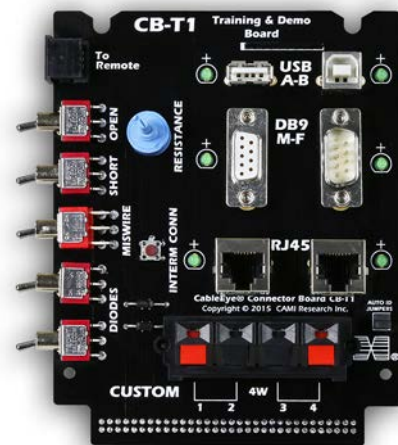
Tester Verification

As a system verification tool, the CB-T1 allows customers to verify the tester is working properly by quickly sampling the full spectrum of fault detection without use of example fault cables. The limitation of physical fault cables is that typically one example is needed for each fault. Use of the CB-T1 will provide a faster and more thorough verification process. The verification cable itself may be learned on first use, and loaded thereafter prior to going through a simple fault simulation procedure.

Facility Verification

Customers may also use the board for demonstrating CableEye functionality to their own customers as a way of creating a quick impression on production quality either during an audit, or during contract negotiations.

Rated to 250Vdc/200Vac, the CB-T1 may be used on all CableEye Testers. The CB-T1 is available as a SINGLE board for \$195 (Item 800), and includes cable and instructions.



CableEye® Training & Verification Board

(contd.)

CB-T1: Training & Verification Board			
Connectors	USB-A (1)	Fault Simulation	Open
	USB-B (1)		Short
	DB9M (1)		Miswire
	DB9F (1)		Diode direction
	RJ45 (2)		Resistance
	Push Pin Connectors (4)		Intermittent connection

CAMI Research produces expandable and upgradable diagnostic Cable & Harness Test Systems for assembly, prototyping, production, and QC of standard or custom cables. CableEye® Testers display, and document basic electrical properties such as continuity, resistance, dielectric breakdown, insulation resistance, miswires, and sporadic defects. camiresearch.com