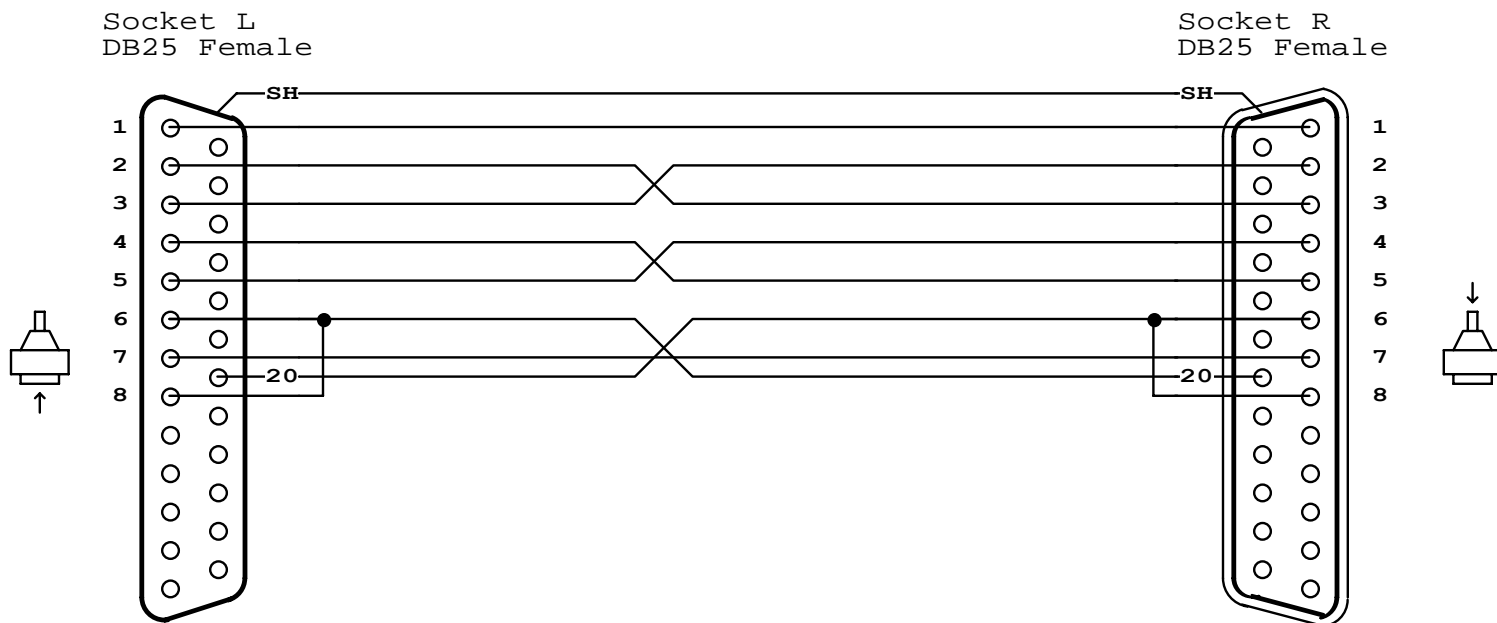


Print your company information here. Set up in Preferences / Print Options.



NETLIST

L-SH	R-SH
L-1	R-1
L-2	R-3
L-3	R-2
L-4	R-5
L-5	R-4
L-6	L-8 R-20
L-7	R-7
L-20	R-6 R-8

NOTES

**DB25 NULL MODEM**  
 (standard handshaking)  
 Use this female-to-female cable in any application where you wish to connect two DTE devices (for example, two computers). A male-to-male equivalent of this cable would be used to connect two DCE devices.

The cable shown below is intended for EIA232 asynchronous communications (most PC-based systems). If you are using synchronous communications, the null modem will have additional connections for timing signals not shown here.

**NOTE:** Not all null modem cables connect handshaking lines the same way. Refer to the manual for your equipment if you experience problems. In this cable, the DTE Ready (pin 20) on one side asserts the DCE Ready (pin 6) and the Request to Send (pin 5) on the other side.