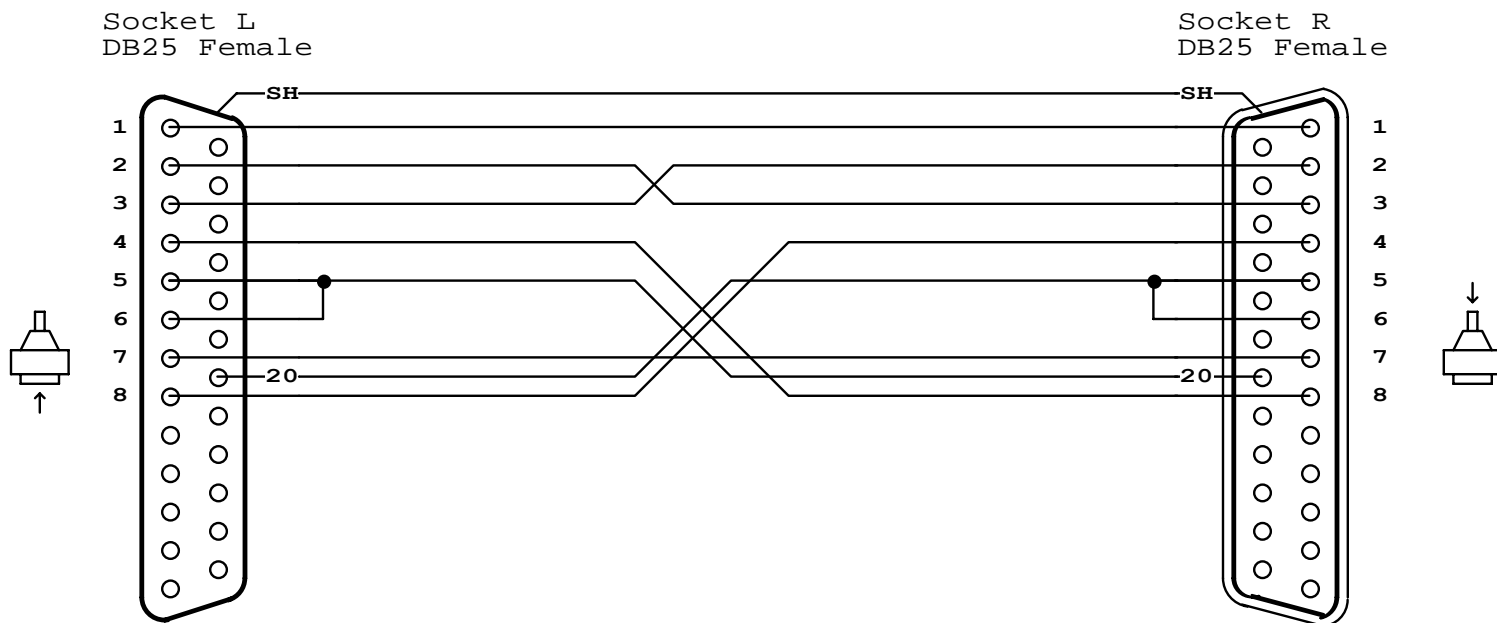


Name: 13 DB25F-DB25F-S8X3

DB25 NULL MODEM

Print your company information here. Set up in Preferences / Print Options.



NETLIST

L-SH	R-SH
L-1	R-1
L-2	R-3
L-3	R-2
L-4	R-8
L-5	L-6 R-20
L-7	R-7
L-8	R-4
L-20	R-5 R-6

NOTES

DB25 NULL MODEM (unusual handshaking)
 Use this female-to-female cable in any application where you wish to connect two DTE devices (for example, two computers). A male-to-male equivalent of this cable would be used to connect two DCE devices.

NOTE: Not all null modem cables connect handshaking lines the same way. Refer to the manual for your equipment if you experience problems. In this cable, the DTE Ready (pin 20) on one side asserts the Clear-to-Send (pin 5) and the DCE Ready (pin 6) on the other side. Request-to-Send (pin 4) on one side asserts Received Line Signal Detect (pin 8) on the other side.

LABEL

**NULL MODEM
 CAMI ID 105**