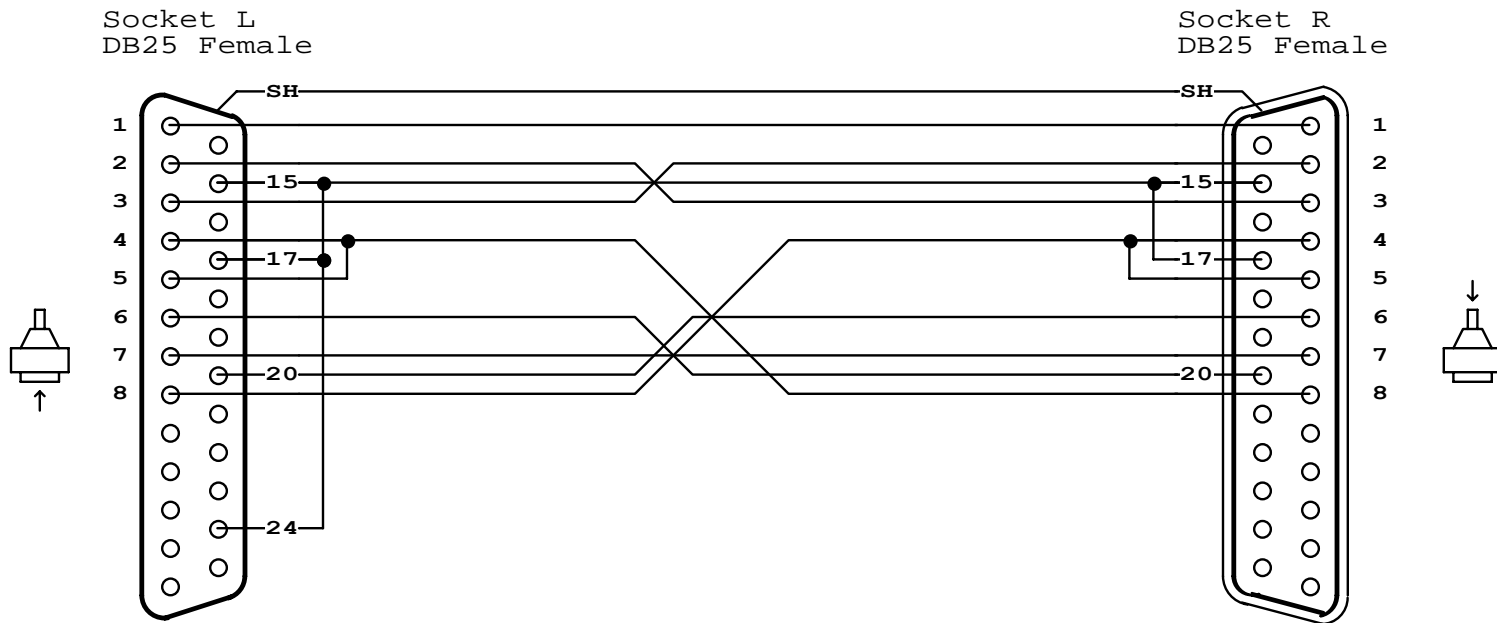


Print your company information here. Set up in Preferences / Print Options.



NETLIST

L-SH	R-SH
L-1	R-1
L-2	R-3
L-3	R-2
L-4	L-5 R-8
L-6	R-20
L-7	R-7
L-8	R-4 R-5
L-15	L-17 L-24 R-15 R-17
L-20	R-6

NOTES

DB25 NULL MODEM (synchronous communications)
 This female-to-female cable is intended for synchronous EIA232 connections, and is designed to connect two DTE devices. It contains the standard connections of an asynchronous null modem cable, plus additional connections on pins 15, 17, and 24 for synchronous timing signals. To connect two DCE devices, use a male-to-male equivalent of this cable.

For synchronous communications, the null modem cable includes an additional conductor for timing signals, and joins pins 15, 17, and 24 on one side to pins 15 and 17 on the other. Pin 24 on the right side should connect to the timing signal source.

L A B E L

**NULL MODEM, SYNC EIA232
 CAMI ID 107**