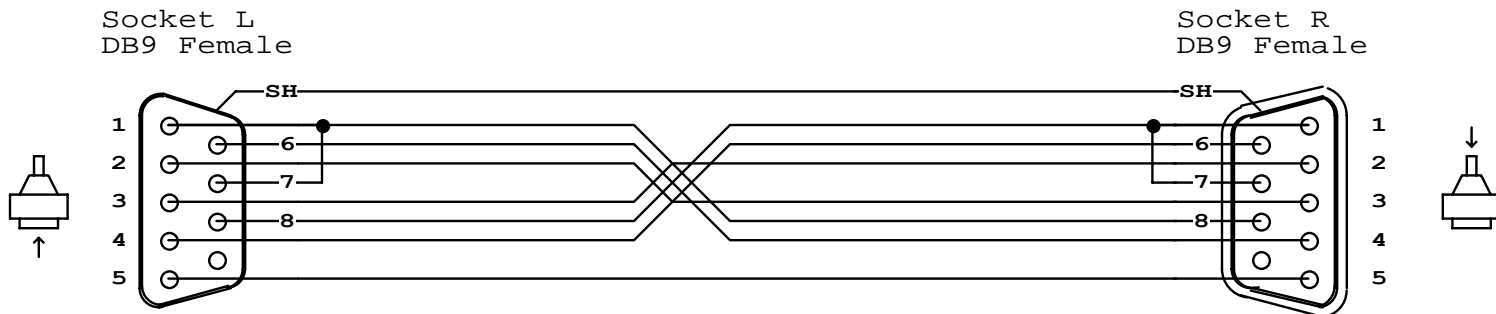


Name: 3 DB9F-DB9F-S7X

DB9 NULL MODEM

Print your company information here. Set up in Preferences / Print Options.



NETLIST

L-SH	R-SH
L-1	L-7 R-8
L-2	R-3
L-3	R-2
L-4	R-6
L-5	R-5
L-6	R-4
L-8	R-1 R-7

NOTES

DB9 NULL MODEM
 Use this female-to-female cable in any application where you wish to connect two DTE devices (for example, two computers). A male-to-male equivalent of this cable would be used to connect two DCE devices.

The cable shown below is intended for RS232 asynchronous communications (most PC-based systems). If you are using synchronous communications, the null modem will have additional connections for timing signals, and a DB25 connector would be necessary.

NOTE: Not all null modem cables connect handshaking lines the same way. In this cable, Request-to-Send (RTS, pin 7) asserts the Carrier Detect (pin 1) on the same side and the Clear-to-Send (CTS, pin 8) on the other side of the cable.

This device may also be available in the form of an adapter.